

A close-up photograph of a wooden post and a twisted branch. The post is vertical and has a weathered, light-colored bark. The branch is thick and has a complex, twisted, and gnarled texture, appearing to be made of multiple layers of wood. The background is a plain, light-colored wall.

BRYAN O'SULLIVAN
COLLECTION

SWEETIE

BRYAN O'SULLIVAN
COLLECTION



W 33 D 33 H 55 CM
W 13 D 13 H 21.7 IN

BRYAN O'SULLIVAN
COLLECTION



W 33 D 33 H 55 CM
W 13 D 13 H 21.7 IN

BRYAN O'SULLIVAN
COLLECTION



W 33 D 33 H 55 CM
W 13 D 13 H 21.7 IN

BRYAN O'SULLIVAN
COLLECTION



W 33 D 33 H 55 CM
W 13 D 13 H 21.7 IN

BRYAN O'SULLIVAN
COLLECTION



BRYAN O'SULLIVAN
COLLECTION



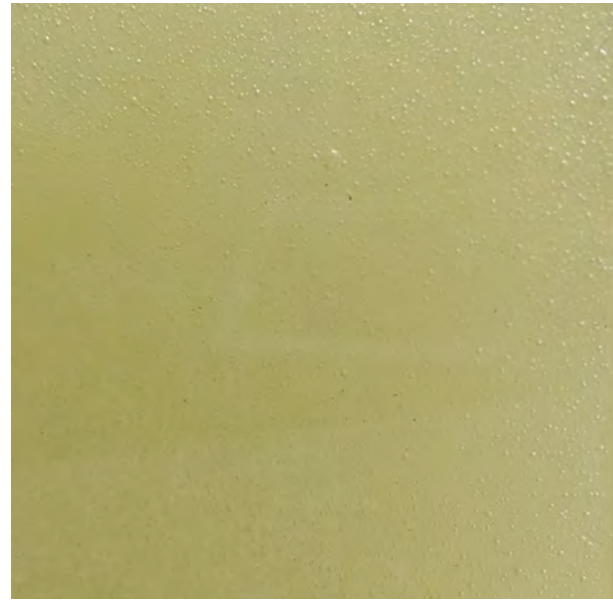
SWEETIE

NICKEL-PLATED CAST BRONZE, HAND-POLISHED CAST GLASS

BRYAN O'SULLIVAN
COLLECTION



NICKEL PLATED CAST BRONZE



HAND POLISHED CAST GLASS

EVERY GLASS PIECE IS METICULOUSLY HANDMADE, UTILIZING TIME-HONORED METHODS. DUE TO THIS ARTISANAL APPROACH, MINOR DISTINCTIONS CAN BE ANTICIPATED, ADDING TO THE UNIQUENESS OF EACH PIECE, ENSURING IT IS TRULY ONE OF A KIND